

● **MATERIALS: (RoHS Compliant)**

Housing: Plastic Thermoplastic
P.B.T UL94V-0 Black

Contacts: Phosphor Bronze Gold
Selective Plated

Front Shell: Steel Nickel Plated Over Copper

● **ELECTRICAL CHARACTERISTICS:**

Contact Current Rating: 0.5 Amp

Dielectric Withstanding Voltage: 500V AC

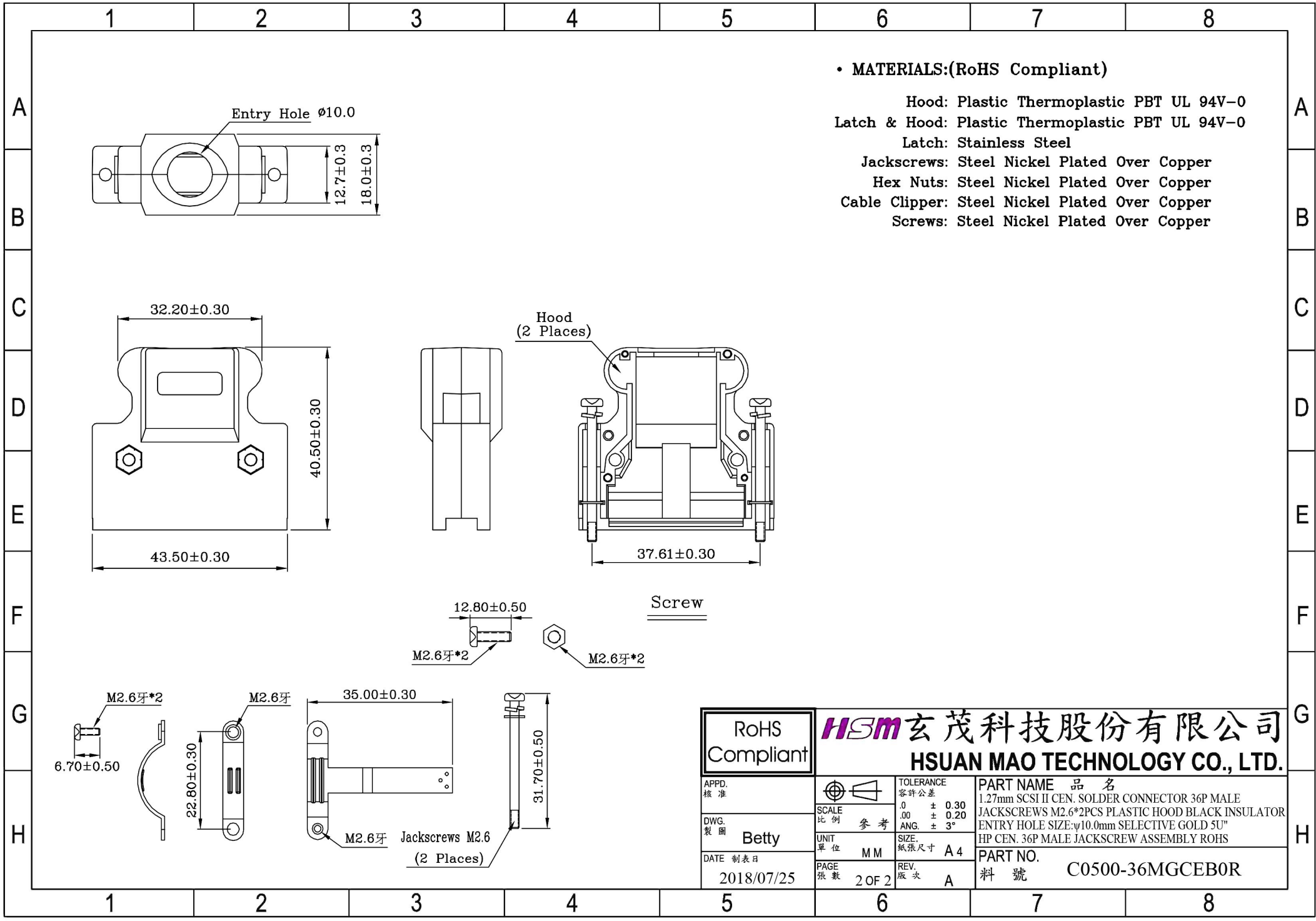
Insulation Resistance: >500MΩ/Min

Contact Resistance: 35mΩ/Max

Operation Temperature: -55°C ~ +85°C

APPD. 核准			TOLERANCE 容許公差	PART NAME 品名 1.27mm SCSI II CEN. SOLDER CONNECTOR 36P MALE JACKSCREWS M2.6*2PCS PLASTIC HOOD BLACK INSULATOR ENTRY HOLE SIZE:φ10.0mm SELECTIVE GOLD 5U" HP CEN. 36P MALE JACKSCREW ASSEMBLY ROHS
DWG. 製圖			SCALE 比例	
DATE 制表日		UNIT 單位	ANG. ± 3°	PART NO. 料號
2018/07/25		M M	REV. 版次	
Betty		PAGE 張數	A 4	C0500-36MGCEB0R
		1 OF 2	A	

RoHS Compliant **HSM 玄茂科技股份有限公司**
HSUAN MAO TECHNOLOGY CO., LTD.



• MATERIALS:(RoHS Compliant)

- Hood: Plastic Thermoplastic PBT UL 94V-0
- Latch & Hood: Plastic Thermoplastic PBT UL 94V-0
- Latch: Stainless Steel
- Jackscrows: Steel Nickel Plated Over Copper
- Hex Nuts: Steel Nickel Plated Over Copper
- Cable Clipper: Steel Nickel Plated Over Copper
- Screws: Steel Nickel Plated Over Copper

RoHS Compliant		玄茂科技股份有限公司 HSUAN MAO TECHNOLOGY CO., LTD.	
APPD. 核准	 SCALE 比例 参考 UNIT 單位 M M PAGE 張數 2 OF 2	TOLERANCE 容許公差 .0 ± 0.30 .00 ± 0.20 ANG. ± 3°	PART NAME 品名 1.27mm SCSI II CEN. SOLDER CONNECTOR 36P MALE JACKSCREWS M2.6*2PCS PLASTIC HOOD BLACK INSULATOR ENTRY HOLE SIZE: $\varnothing 10.0$ mm SELECTIVE GOLD 5U ⁺ HP CEN. 36P MALE JACKSCREW ASSEMBLY ROHS
DWG. 製圖 Betty		SIZE 紙張尺寸 A 4	PART NO. 料號 C0500-36MGCEB0R
DATE 制表日 2018/07/25	REV. 版次 A		