

• **MATERIALS:(RoHS Compliant)**

Housing And Cover: Plastic Thermoplastic
P.B.T UL94V-0 Black
Contacts: Phosphor Bronze Gold
Selective Plated
Front Shell: Steel Nickel Plated
Over Copper

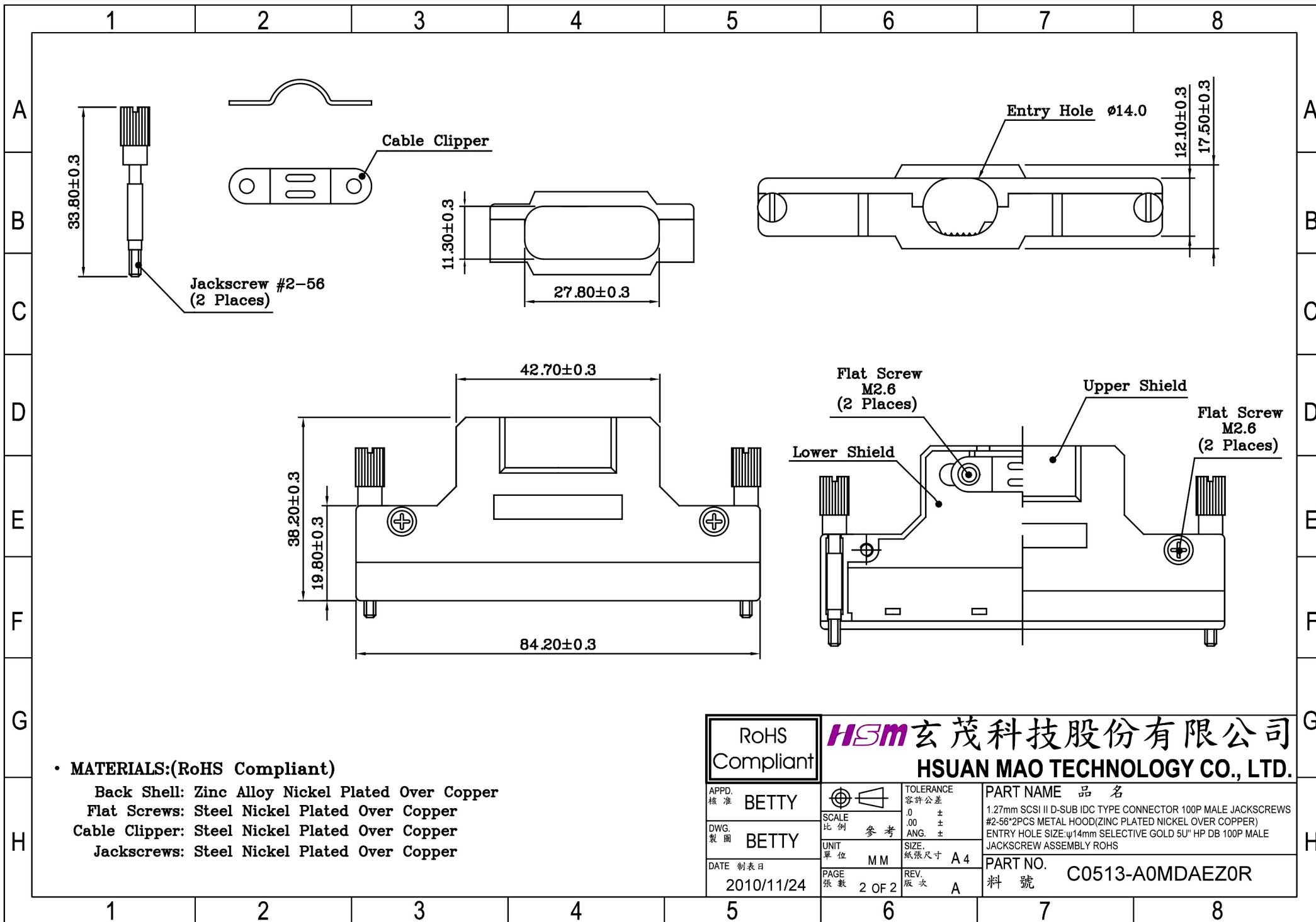
• **ELECTRICAL CHARACTERISTICS:**

Contact Current Rating: 1 Amp
Dielectric Withstanding Voltage: 500V AC
Insulation Resistance: >500M /Min
Contact Resistance: 35m /Max
Operation Temperature: -55°C ~ +105°C

Termination Cover
(1 Places)

Wire Holder 0.62mm
(2 Places)

RoHS Compliant		玄茂科技股份有限公司 HSUAN MAO TECHNOLOGY CO., LTD.	
APPD. 核准 BETTY	SCALE 比例 参考	TOLERANCE 容許公差 .0 ± .00 ± ANG. ±	PART NAME 品名 1.27mm SCSI II D-SUB IDC TYPE CONNECTOR 100P MALE JACKSCREWS #2-56*2PCS METAL HOOD(ZINC PLATED NICKEL OVER COPPER) ENTRY HOLE SIZE:φ14mm SELECTIVE GOLD 5U" HP DB 100P MALE JACKSCREW ASSEMBLY ROHS
DWG. 製圖 BETTY	UNIT 單位 MM	SIZE. 紙張尺寸 A 4	PART NO. 料號 C0513-A0MDAEZ0R
DATE 制表日 2010/11/24	PAGE 張數 1 OF 2	REV. 版次 A	



• MATERIALS:(RoHS Compliant)

- Back Shell: Zinc Alloy Nickel Plated Over Copper
- Flat Screws: Steel Nickel Plated Over Copper
- Cable Clipper: Steel Nickel Plated Over Copper
- Jackscrews: Steel Nickel Plated Over Copper

RoHS Compliant		玄茂科技股份有限公司 HSUAN MAO TECHNOLOGY CO., LTD.	
APPD. 核准	BETTY	TOLERANCE 容許公差 .0 ± .00 ± ANG. ±	PART NAME 品名
DWG. 製圖	BETTY		1.27mm SCSI II D-SUB IDC TYPE CONNECTOR 100P MALE JACKSCREWS #2-56*2PCS METAL HOOD(ZINC PLATED NICKEL OVER COPPER) ENTRY HOLE SIZE:φ14mm SELECTIVE GOLD 5U" HP DB 100P MALE JACKSCREW ASSEMBLY ROHS
DATE 制表日	2010/11/24	UNIT 單位	PART NO.
		PAGE 張數	料號
		M M	C0513-A0MDAEZ0R
		2 OF 2	
		REV. 版次	
		A	