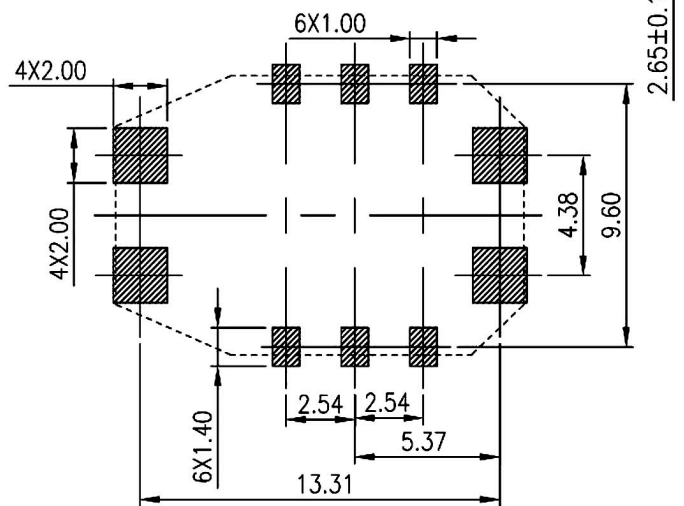
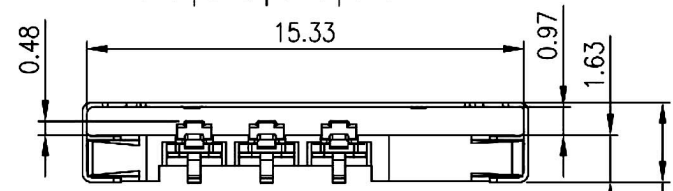
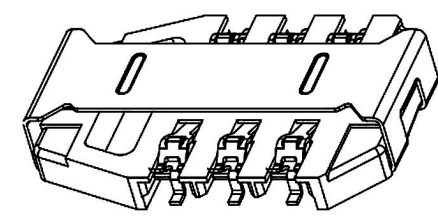
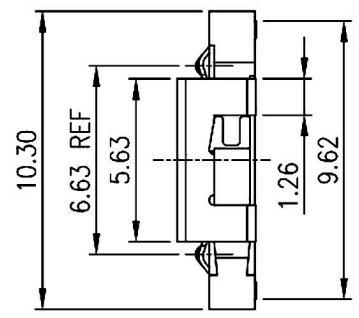
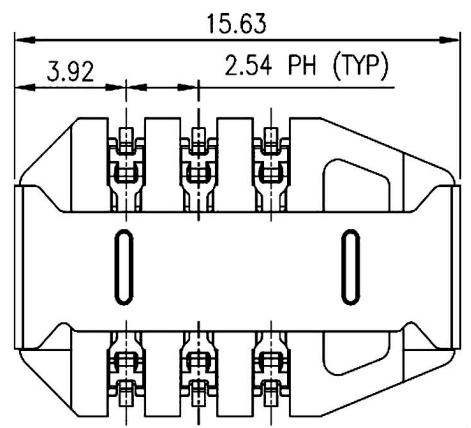


1 2 3 4 5 6 7 8

A
B
C
D
E
F
G
H

A
B
C
D
E
F
G
H



Recommended PCB Layout
(PCB所有尺寸公差为±0.05)

NOTE:

1. MATERIAL:
 - A. HOUSING: LCP, UL 94-V0 COLOR: BLACK
 - B. CONTACT: PHOSPHOR BRONZE C5210H t=0.15
 - C. SHELL: STAINLESS STEEL, t=0.15
2. PLATING: Underplate: 70u" Nickel
Contact area: 3u" Gold
Solder tails area: 1u" Gold
3. Electrical characteristics:
 - A. Operating voltage: 250V(AC/DC).
 - B. Current rating: 1AMP MAX
 - C. Operating temperature: -20°c~+85°c.
 - D. Insulation resistance: 1000M ohme min. at 250VDC.
 - E. Dielectric withstanding voltage: 500 VAC/1minute.
 - F. Contact resistance: 40m ohme max.

RoHS Compliant		HSM 玄茂科技股份有限公司 HSUAN MAO TECHNOLOGY CO., LTD.	
APPD. 核准		TOLERANCE: X.X ±0.30 X.XX ±0.25 X.XXX ±0.15	PART NAME 品名 SIM CARD CONNECTOR 6PIN RHOMBUS TYPE SMT TYPE H=2.7mm GOLD FLASH PLATING W/O LOCATING PEG & W/O SWITCH
DWG. 製圖	Betty	SCALE 比例 參考	REEL PACKING ROHS
DATE 制表日	2016/07/28	UNIT 單位 M M	PART NO. C0649-06DAAGBRR
		PAGE 張數 1 OF 1	料號 C0649-06DAAGBRR
		REV. 版次 A	

1 2 3 4 5 6 7 8