

1 2 3 4 5 6 7 8

A

B

C

D

E

F

G

H

A

B

C

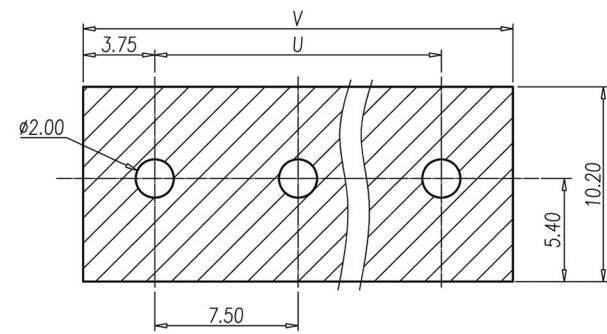
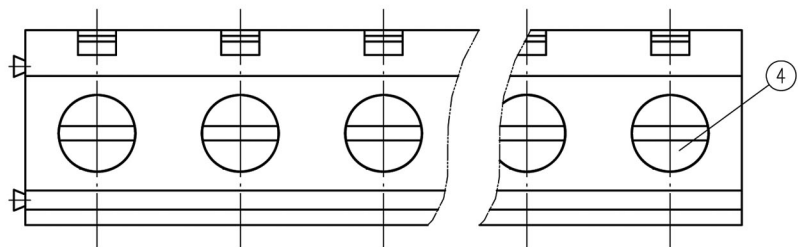
D

E

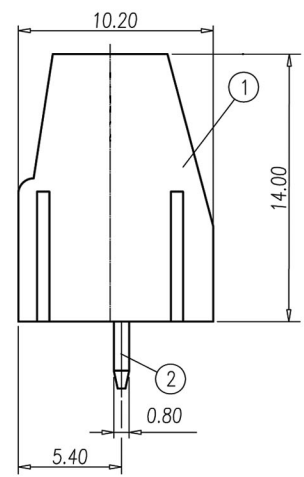
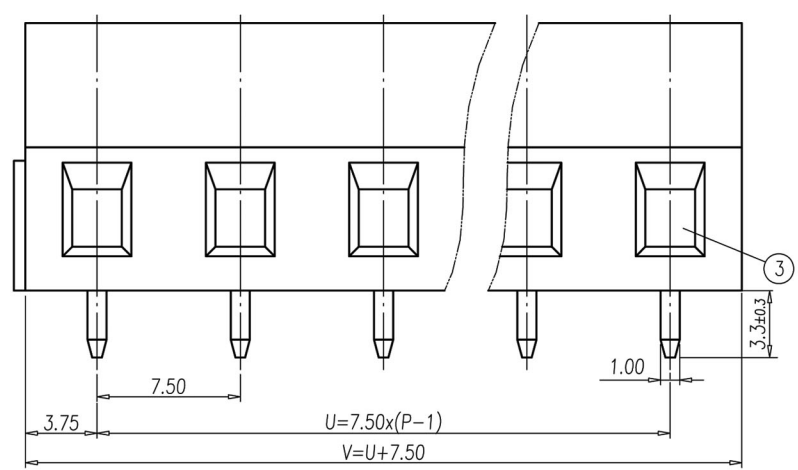
F

G

H



P.C.B. LAYOUT



NOTES:

- Rating: 300V 10A (IEC250V 24A)  
PITCH: 7.5mm
- Insulation Withstands Voltage:  
AC 2000V at 1 minute
- Insulation Resistance:  
500MΩ or more at DC500V
- Using Temperature Range:  
-40°C~+105°C
- Suitable Electric Wire:  
24~12AWG(IEC 0.5~2.5mm<sup>2</sup>)
- Screw Torque Value:0.5N·m (MAX)
- RoHS Compliance

ITEM	NAME OF PART	MATERIAL	NOTES
4	SCREW	STEEL	ZINC Plated
3	WIRE CAGE	STEEL	ZINC Plated
2	SOLDER POST	COPPER ALLOY	Tin Plated
1	HOUSING	PA66	UL94-V0 GREEN

Normal Geometric Tolerancing			
—	//	≡	⊥
0 to 100	0.2	0 to 10	0.2
over 100 to 150	0.3	over 10	0.3
over 150	0.5		
Total Pitch Tolerances		Normal dimension Tolerances	
0<U≤30	±0.20	0~30	±0.25
30<U≤53	±0.25	over 30~53	±0.30
53<U≤70	±0.30	over 53~70	±0.35
70<U≤90	±0.35	over 70~90	±0.44
90<U≤115	±0.44	over 90~115	±0.55
115<U≤150	±0.55	over 115~150	±0.70

P	2	3	4	5	6	7	8	9	10
U	7.5	15.0	22.5	30.0	37.5	45.0	52.5	60.0	67.5
V	15.0	22.5	30.0	37.5	45.0	52.5	60.0	67.5	75.0

**RoHS Compliant**

**HSM 玄茂科技股份有限公司**  
**HSUAN MAO TECHNOLOGY CO., LTD.**

APPD. 核准		TOLERANCE 容許公差	PART NAME 品名
DWG. 製圖		SCALE 比例	
DATE 制表日	Hedy	UNIT 單位	PART NO.
2014/02/24		M M	
		PAGE 張數	
		1 / 1	
		REV. 版次	
		A	

1 2 3 4 5 6 7 8