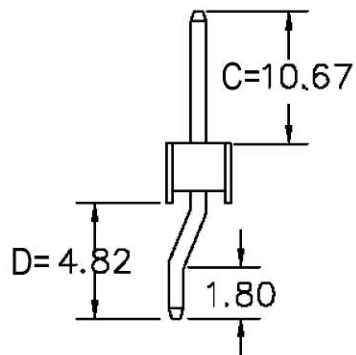


RECOMMENDED P.C.B LAYOUT



|          |      |
|----------|------|
| CONTACTS | 1X21 |
| 1X2      | 1X22 |
| 1X3      | 1X23 |
| 1X4      | 1X24 |
| 1X5      | 1X25 |
| 1X6      | 1X26 |
| 1X7      | 1X27 |
| 1X8      | 1X28 |
| 1X9      | 1X29 |
| 1X10     | 1X30 |
| 1X11     | 1X31 |
| 1X12     | 1X32 |
| 1X13     | 1X33 |
| 1X14     | 1X34 |
| 1X15     | 1X35 |
| 1X16     | 1X36 |
| 1X17     | 1X37 |
| 1X18     | 1X38 |
| 1X19     | 1X39 |
| 1X20     | 1X40 |

MATERIAL

HOUSING : THERMOPLASTIC UL94V-0  
CONTACT : COPPER ALLOYS

SPECIFICATION

CURRENT: 3A  
OPERATING TEMPERATURE: -55°C TO +105°C  
CONTACT RESISTANCE : 20 MILLIOHMS MAX  
INSULATION RESISTANCE : 1000 MEGAOHMS MIN  
WITHSTANDING VOLTAGE: AC 1000V RMS

RoHS  
Compliant

**HSM** 玄茂科技股份有限公司  
HSUAN MAO TECHNOLOGY CO., LTD.

APPD. 核准 James  
DWG. 製圖 Jolin  
DATE 制表日 2006/11/21

SCALE 比例 參考  
UNIT 單位 MM  
PAGE 張數 1 OF 1

TOLERANCE 容許公差  
.0=±0.38  
.00=±0.25  
ANG=±5°  
SIZE 紙張尺寸 A4  
REV. 版本 A

PART NAME 品名  
2.54mm PIN HEADER SINGLE ROW  
HORIZONTAL SMT TYPE H=2.54mm  
GOLD FLASH PLATING (C=10.6mm D=4.82mm)  
ROHS LOW-LEAD  
PART NO. 料號 C2103-XXADGKAXR