

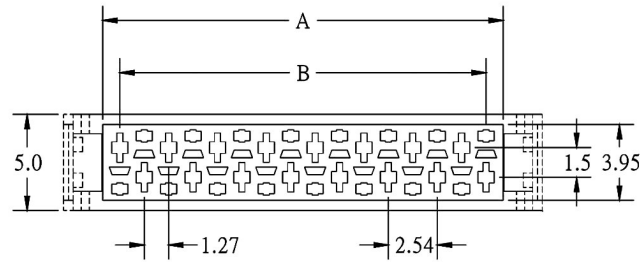
SPECIFICATIONS

Material

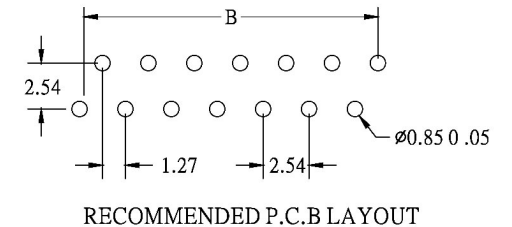
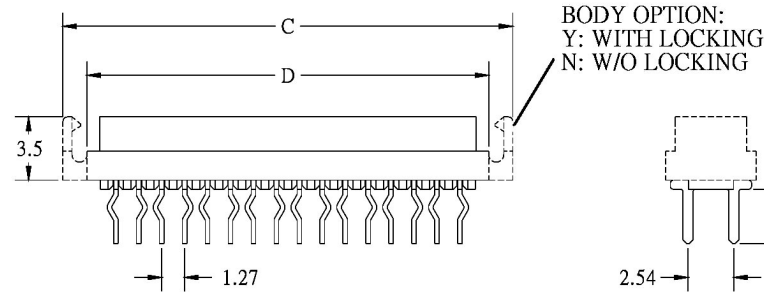
Insulator : PBT, glass reinforced, rated UL 94V-0
 Contact : Phosphor Bronze

Electrical

Current Rating : 1 Amp
 Contact Resistance : 30 mΩ max.
 Insulation Resistance : 3000 MΩ min.
 Dielectric Withstanding Voltage : 500V AC for 1minute
 Operating Temperature : -40°C to +105°C



POSITION	A	B	C	D
4	5.59	3.81	9.66	6.98
6	8.13	6.35	12.20	9.52
8	10.67	8.89	14.74	12.06
10	13.21	11.43	17.28	14.60
12	15.75	13.97	19.82	17.14
14	18.29	16.51	22.36	19.68
16	20.83	19.05	24.90	22.22
18	23.37	21.59	27.44	24.76
20	25.91	24.13	29.98	27.30
22	28.45	26.67	32.52	29.84
24	30.99	29.21	35.06	32.38
26	33.53	31.75	37.60	34.92



C	3128	XX	P	N	X	X	R	0	R
1	2	3	4	5	6	7	8	9	10

- | | | | |
|---|---|---|--|
| 1. PRODUCTS:
C: Connector
2. SERIES NO.:
3128
3. CONTACT NO.:
04-26
4. CONTACT MATERIAL:
P: Phosphor Brass | 5. SPECIAL FUNCTION:
N: W/O Polarization
(Normal Type)
6. PARTS OPTION:
Y: W/ Locking
N: W/O Locking | 7. CONTACT PLATING:
T: Tin
S: Selective Gold
G: Gold Flash
A: Gold 50"
B: Gold 100"
C: Gold 150"
D: Gold 300" | 8. INSULATOR COLOR:
R: Red
9. FILL IT WITH "0"
10. ROHS LOW-LEAD |
|---|---|---|--|

RoHS
Compliant

HSM 玄茂科技股份有限公司
HSUAN MAO TECHNOLOGY CO., LTD.

APPD. 核准		TOLERANCE 容許公差	PART NAME 品名
DWG. 製圖	Hedy	SCALE 比例 參考	2.54mm MICRO-MATCH MINLATURE CONNECTOR
DATE 制表日	2011/10/04	UNIT 單位 M M	FEMALE ON BOARD TOP ENTRY TYPE 8P PHOSPHOR
		PAGE 張數 1 OF 1	BRASS MATERIAL, W/O POLARIZATION ROHS LOW-LEAD
		REV. 版次 A	PART NO. 料號 C3128-XXPNXXR0R