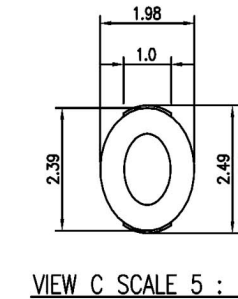
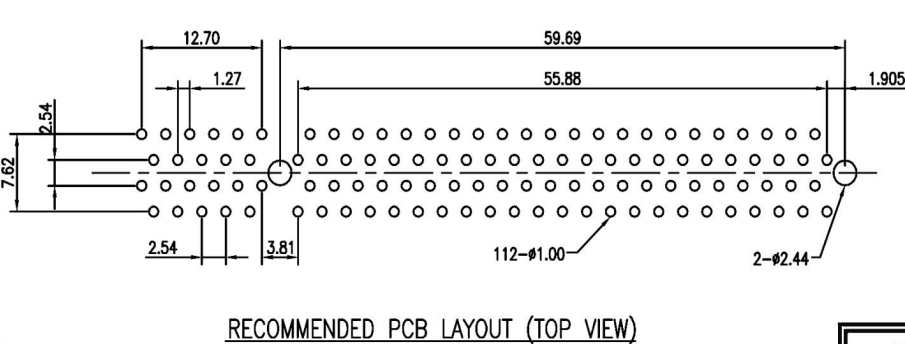
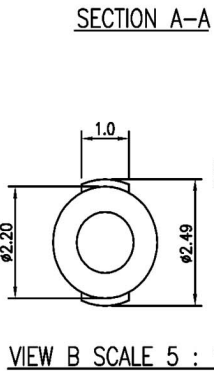


MATERIAL
 INSULATOR: GLASS-REINFORCED THERMOPLASTIC.
 CONTACT: COPPER ALLOY.
 PLATING: MATING AREA - SELECTED GLOD OVER NICKEL.
 SOLDER AREA - TIN OVER NICKEL.

ELECTRICAL
 VOLTAGE RATING: 250 VAC RMS.
 CURRENT RATING: 1 AMP.
 DIELECTRICAL WITHSTANDING VOLTAGE: 500 VAC RMS 60 Hz FOR 1 MINUTE.
 INSULATION RESISTANCE: 1000 MEGOHMS MIN AT 500 VDC.
 CONTACT RESISTANCE: 30 MILLIOHMS MAX AT 1 AMP DC.

MECHANICAL
 RETENTION FORCE: 460 GRAMS MIN PER CONTACT.
 INSERTION FORCE: 230 GRAMS MAX PER CONTACT PER.
 WITHDRAWAL FORCE: 15 GRAMS MIN PER CONTACT PER.

ENVIRONMENTAL
 TEMPERATURE RANGE: -55°C TO +85°C.



RoHS
Compliant

HSM 玄茂科技股份有限公司
HSUAN MAO TECHNOLOGY CO., LTD.

APPD. 核准
 DWG. 製圖 Betty
 DATE 制表日 2014/11/26

SCALE 比例 參考	TOLERANCE	
	LINEAR	ANGLES
UNIT 單位 M M	X±0.40	X°±
	.X±0.30	.X°±
	.XX±0.20	.XX°±
PAGE 張數 1 OF 1	SIZE. 紙張尺寸 A 4	REV. 版次 A

PART NAME 品名
 1.27mm CARD EDGE STRAIGHT TYPE
 PCI 112P PLASTIC POST
 SELECTIVE GOLD PLATED NYLON BROWN ROHS

PART NO.
 料號 C3612-B2PNSN00R