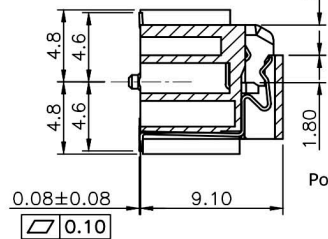


**SPECIFICATION:**

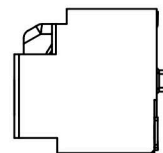
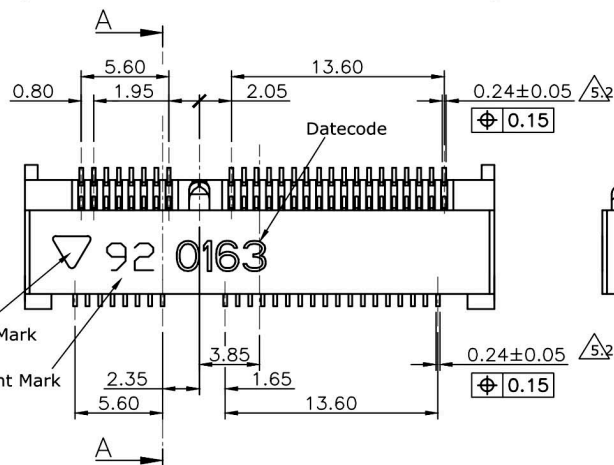
1. ELECTRICAL
  - 1.1 Current Rating: 0.5A per pin
  - 1.2 Voltage Rating: 50V AC
  - 1.3 Contact Resistance: 55mΩ Max
  - 1.4 Insulation Resistance: 500MΩ Min
  - 1.5 Dielectric Withstanding Voltage: 300VAC
2. MECHANICAL
  - 2.1 Durability: 50 Cycles
  - 2.2 Total Mating/Unmating Force: 2.3Kgf max.
3. ENVIRONMENTAL
  - 3.1 Operating temperature range: -40°C~+85°C
  - 3.2 Storage temperature range: -40°C~+85°C
4. SOLDER ABILITY
  - 4.1 Recommended IR-Reflow Temperature: 260°C 10Sec

Date Code: Y WW D

Year | | Day(1~7)  
Week(1~52)



SECTION A-A

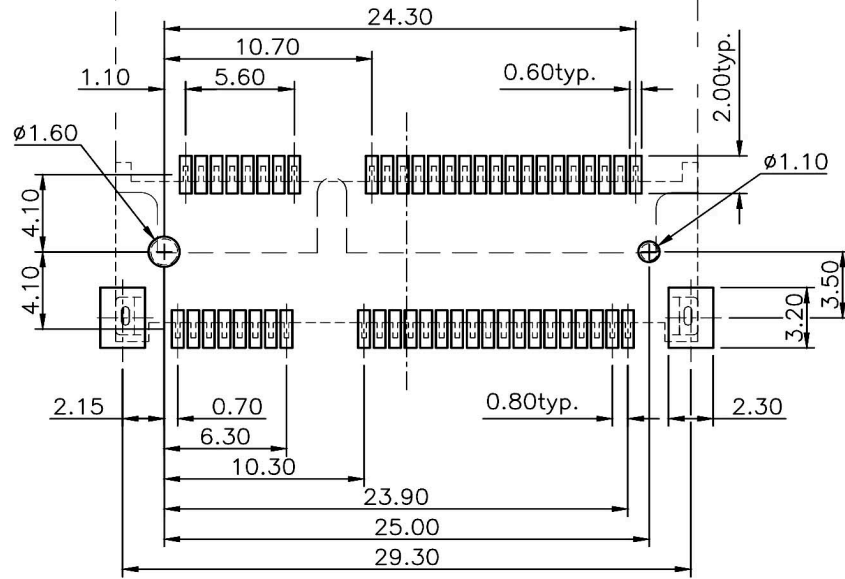
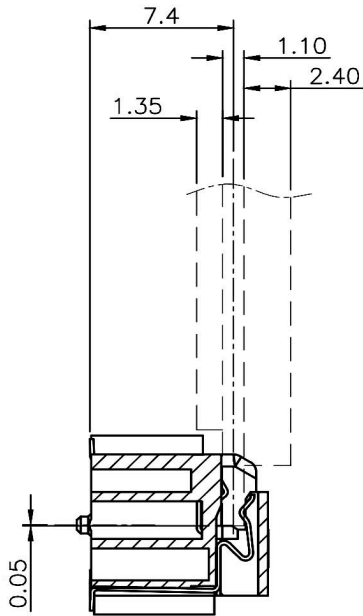


3	HOLDDOWN	Brass, Tin plated under nickel plating
		Phosphor Bronze, contact area: G/F
2	CONTACT	solder area: Tin, under plating Nickel
1	HOUSING	LCP UL94V-0, Black
NO.	PART NAME	DESCRIPTION

RoHS  
Compliant

**HSM** 玄茂科技股份有限公司  
**HSUAN MAO TECHNOLOGY CO., LTD.**

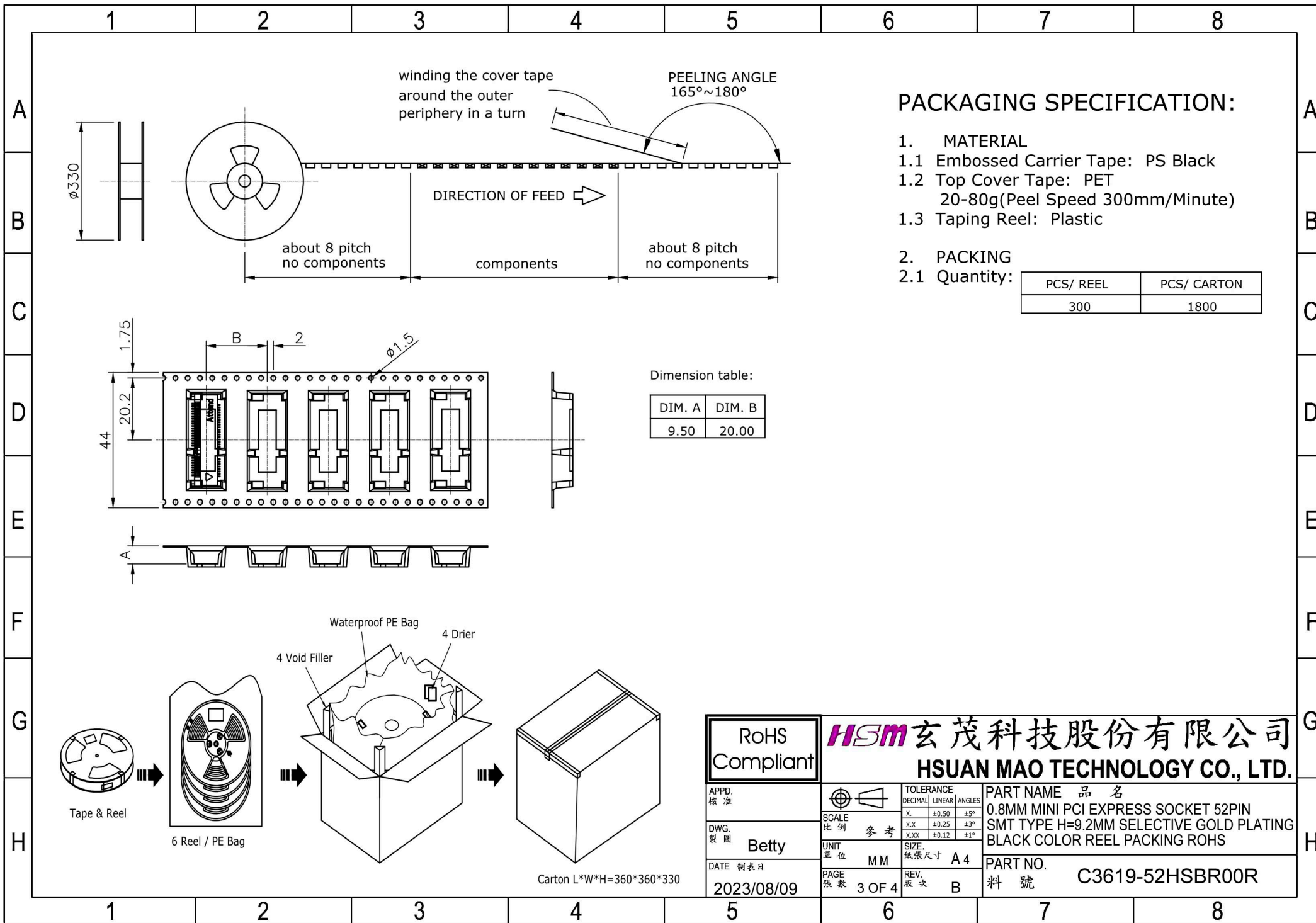
APPD. 核准		TOLERANCE	PART NAME 品名
DWG. 製圖		DECIMAL	0.8MM MINI PCI EXPRESS SOCKET 52PIN
DATE 制表日		LINEAR	SMT TYPE H=9.2MM SELECTIVE GOLD PLATING
2023/08/09		ANGLES	BLACK COLOR REEL PACKING ROHS
	SCALE 比例	X. ±0.50 ±5°	PART NO.
	UNIT 單位	X.X ±0.25 ±3°	C3619-52HSBR00R
	PAGE 張數	X.XX ±0.12 ±1°	料號
		SIZE 紙張尺寸	
		REV. 版次	
		A 4	
		B	



--- CARD  
 --- PAD LAYOUT

**RECOMMEND LAYOUT (TOP VIEW)**  
**GENERAL TOLERANCE: ±0.05**

RoHS Compliant		<b>HSM</b> 玄茂科技股份有限公司		HSUAN MAO TECHNOLOGY CO., LTD.	
APPD. 核准	Betty	SCALE 比例 参考	TOLERANCE DECIMAL LINEAR ANGLES X. ±0.50 ±5° X.X ±0.25 ±3° X.XX ±0.12 ±1°	PART NAME 品名	
DWG. 製圖				0.8MM MINI PCI EXPRESS SOCKET 52PIN SMT TYPE H=9.2MM SELECTIVE GOLD PLATING BLACK COLOR REEL PACKING ROHS	
DATE 制表日	2023/08/09	UNIT 單位 MM	SIZE. 紙張尺寸 A 4	PART NO.	
		PAGE 張數 2 OF 4	REV. 版次 B	料號 C3619-52HSBR00R	



### PACKAGING SPECIFICATION:

1. MATERIAL
  - 1.1 Embossed Carrier Tape: PS Black
  - 1.2 Top Cover Tape: PET  
20-80g(Peel Speed 300mm/Minute)
  - 1.3 Taping Reel: Plastic

### 2. PACKING

#### 2.1 Quantity:

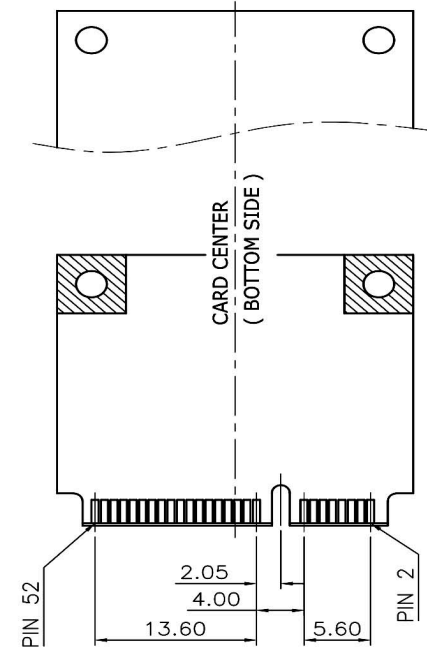
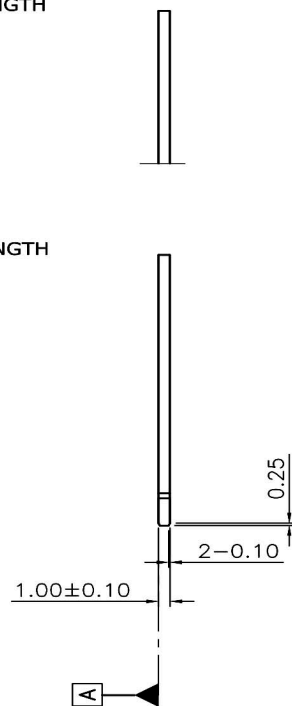
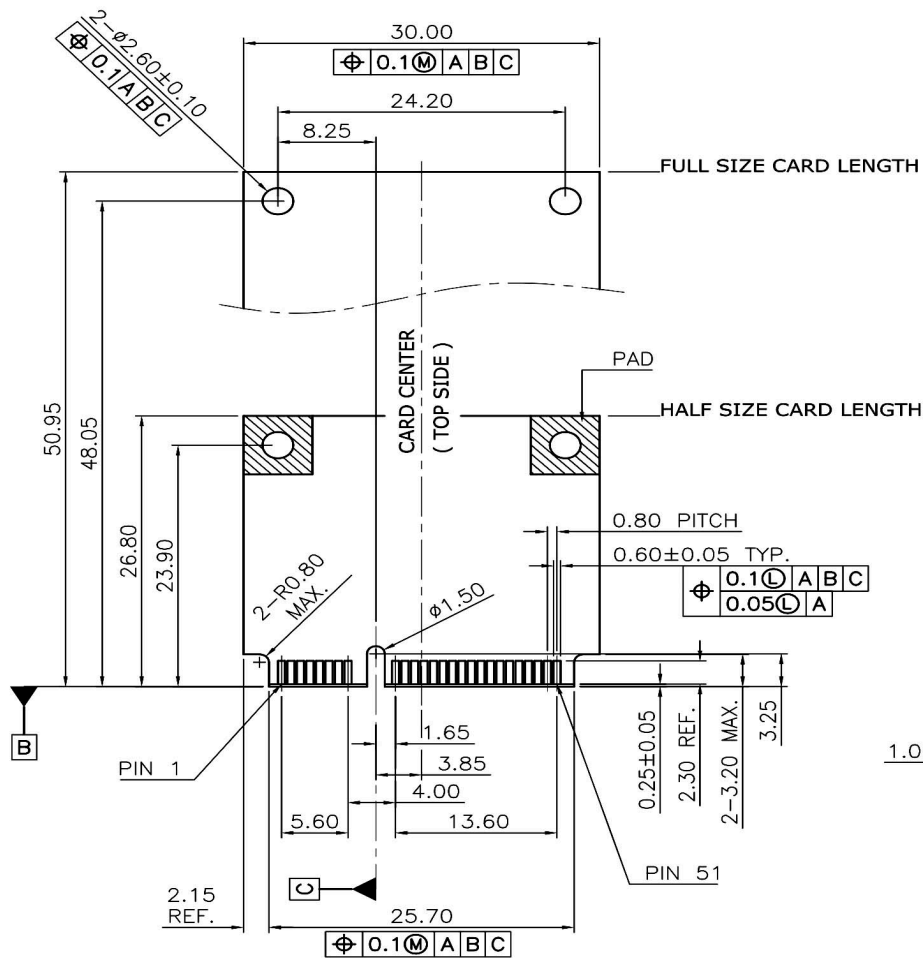
PCS/ REEL	PCS/ CARTON
300	1800

Dimension table:

DIM. A	DIM. B
9.50	20.00

<p>RoHS Compliant</p>		<p><b>HSM</b> 玄茂科技股份有限公司 HSUAN MAO TECHNOLOGY CO., LTD.</p>										
<p>APPD. 核准</p>		<p>TOLERANCE DECIMAL LINEAR ANGLES</p> <table border="1"> <tr> <td>X.</td> <td>±0.50</td> <td>±5°</td> </tr> <tr> <td>X.X</td> <td>±0.25</td> <td>±3°</td> </tr> <tr> <td>X.XX</td> <td>±0.12</td> <td>±1°</td> </tr> </table>	X.	±0.50	±5°	X.X	±0.25	±3°	X.XX	±0.12	±1°	<p>PART NAME 品名 0.8MM MINI PCI EXPRESS SOCKET 52PIN SMT TYPE H=9.2MM SELECTIVE GOLD PLATING BLACK COLOR REEL PACKING ROHS</p>
X.	±0.50	±5°										
X.X	±0.25	±3°										
X.XX	±0.12	±1°										
<p>DWG. 製圖</p>	<p>Betty</p>	<p>SCALE 比例 參考</p>	<p>PART NO. 料號 C3619-52HSBR00R</p>									
<p>DATE 制表日</p>	<p>2023/08/09</p>	<p>UNIT 單位 MM</p>										
		<p>PAGE 張數 3 OF 4</p>										
		<p>REV. 版次 B</p>										

Carton L\*W\*H=360\*360\*330



RoHS Compliant		<b>HSM</b> 玄茂科技股份有限公司 <b>HSUAN MAO TECHNOLOGY CO., LTD.</b>	
APPD. 核准		TOLERANCE DECIMAL LINEAR ANGLES	PART NAME 品名 0.8MM MINI PCI EXPRESS SOCKET 52PIN SMT TYPE H=9.2MM SELECTIVE GOLD PLATING BLACK COLOR REEL PACKING ROHS
DWG. 製圖 Betty	SCALE 比例 參考	X. ±0.50 ±5° X.X ±0.25 ±3° X.XX ±0.12 ±1°	PART NO. 料號 C3619-52HSBR00R
DATE 制表日 2023/08/09	UNIT 單位 MM	SIZE. 紙張尺寸 A 4	
	PAGE 張數 4 OF 4	REV. 版次 B	