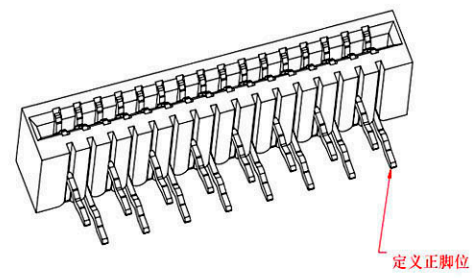
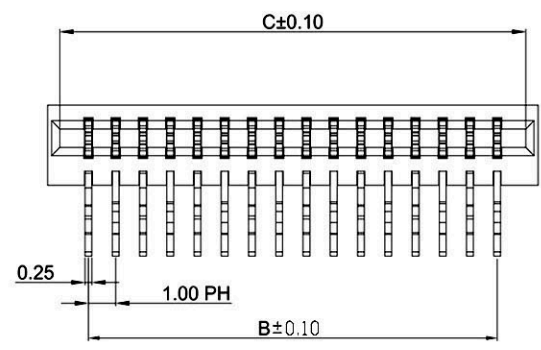


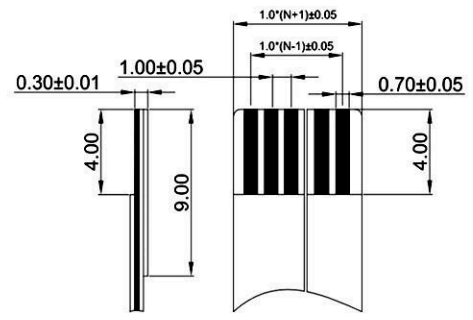
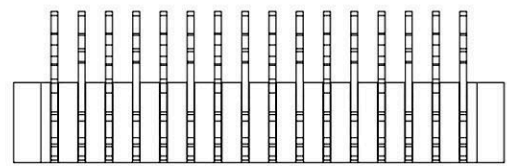
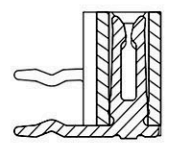
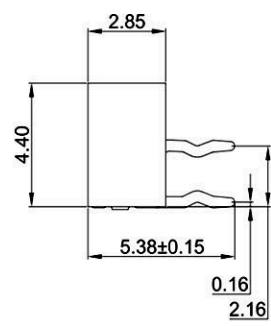
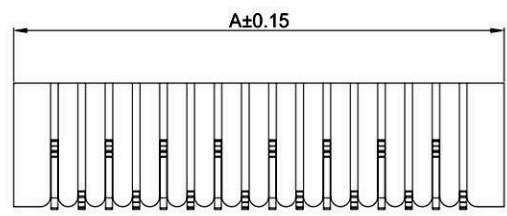
1 2 3 4 5 6 7 8

A
B
C
D
E
F
G
H

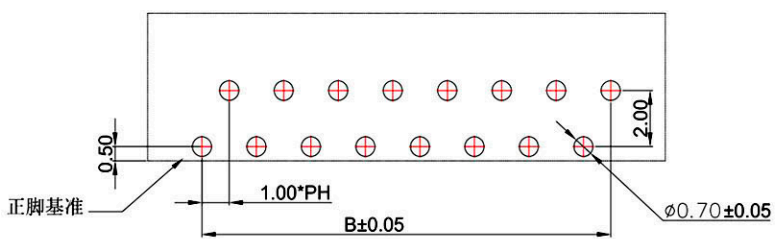
A
B
C
D
E
F
G
H



SPEC :
 1. Housing: High-Temp Plastic, UL94V-0
 Color: Black(LCP)
 2. Contact: Phosphor Bronze(C5191)



孔位	A	B	C
4	6.00	3.00	5.10
5	7.00	4.00	6.10
6	8.00	5.00	7.10
7	9.00	6.00	8.10
8	10.00	7.00	9.10
9	11.00	8.00	10.10
10	12.00	9.00	11.10
11	13.00	10.00	12.10
12	14.00	11.00	13.10
13	15.00	12.00	14.10
14	16.00	13.00	15.10
15	17.00	14.00	16.10
16	18.00	15.00	17.10
17	19.00	16.00	18.10
18	20.00	17.00	19.10
19	21.00	18.00	20.10
20	22.00	19.00	21.10
21	23.00	20.00	22.10
22	24.00	21.00	23.10
23	25.00	22.00	24.10
24	26.00	23.00	25.10
25	27.00	24.00	26.10
26	28.00	25.00	27.10
27	29.00	26.00	28.10
28	30.00	27.00	29.10
29	31.00	28.00	30.10
30	32.00	29.00	31.10
31	33.00	30.00	32.10
32	34.00	31.00	33.10
33	35.00	32.00	34.10
34	36.00	33.00	35.10
35	37.00	34.00	36.10



PCB LAYOUT

APPD. 核准 Betty DWG. 製圖 Lena DATE 制表日 2024/05/22		RoHS Compliant HSM 玄茂科技股份有限公司 HSUAN MAO TECHNOLOGY CO., LTD.	TOLERANCE 0 ± 0.30 .00 ± 0.20 .000 ± 0.10 ANG. ± 3°	PART NAME 品名 FPC/FFC NON-ZIF 1.0MM DIP 90° NORMAL LAYOUT DOUBLE CONTACT XXPIN TIN PLATING TUBE PACKING BLACK COLOR ROHS
UNIT 單位 MM PAGE 張數 1 OF 1	SCALE 比例 參考 SIZE 紙張尺寸 A4 REV. 版本 A	PART NO. 料號 C3957-XXRTTB00R		

1 2 3 4 5 6 7 8