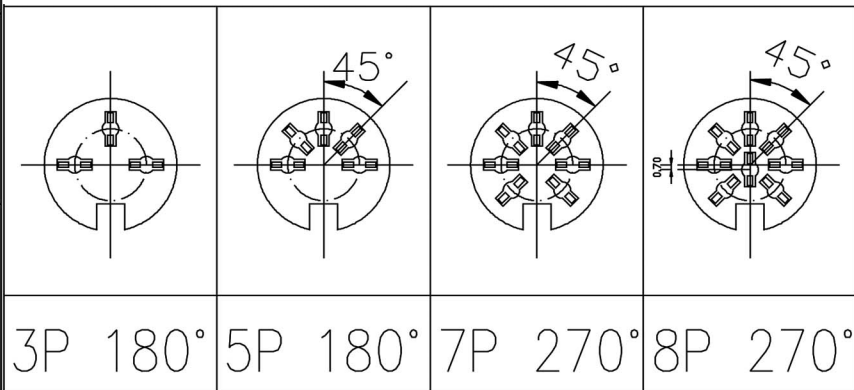


**MATERIALS:**

- 1.SOCKET CASE:SPCC-SD 0.4t NICKEL PLATED
- 2.INSULATOR:P.B.T
- 3.EARTH TERMINAL:PBSR-H 0.25t TIN PLATED
- 4.CONTACT PIN: BRAS 0.7t SILVER PLATED
- 5.RIVET: AL NICKEL PLATED

**SPECIFICATIONS:**

- 1.RATING:100V AC AT 1A or 12V DC 2A MAX
- 2.INSULATION RESISTANCE: 100M OHM MIN. AT 500V DC
- 3.DIELECTRIC STRENGTH: 250V AC FOR ONE MINUTE
- 4.VOLTAGE WITHSTANDING: AC 1000V FOR ONE MIN.
- 5.INSERTION FORCE: 4.0KG MAX.
- 6.WITHDRAWAL FORCE: 1-3.5KG.
- 7.CONTACT RESISTANCE: LESS THAN 30m OHM.
- 8.Operation Temperature : 5℃~70℃
- 9.LIFE CYCLE: 5000~10000TIMES



3P 180°    5P 180°    7P 270°    8P 270°

<b>RoHS Compliant</b>		<b>HSM 玄茂科技股份有限公司</b>	
		<b>HSUAN MAO TECHNOLOGY CO., LTD.</b>	
APPD. 核准 <b>Abby</b>		TOLERANCE 容許公差 .0 ± 0.1 .00 ± 0.05 ANG. ±	PART NAME 品名 DIN SOCKET SOLDER TYPE XXP XXX° SHELL: NICKEL PLATING CONTACT PIN: SILVER PLATING ROHS
DWG. 製圖 <b>Hedy</b>		SCALE 比例 參考 UNIT 單位 MM PAGE 張數 1 / 1	SIZE. 紙張尺寸 A4 REV. 版本 B
DATE 制表日 2015/12/03			PART NO. 料號 C8014-XXAAVB0XR