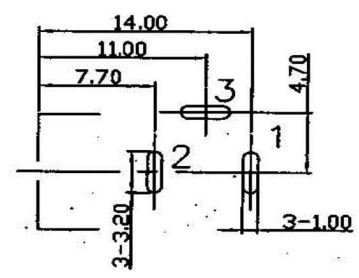
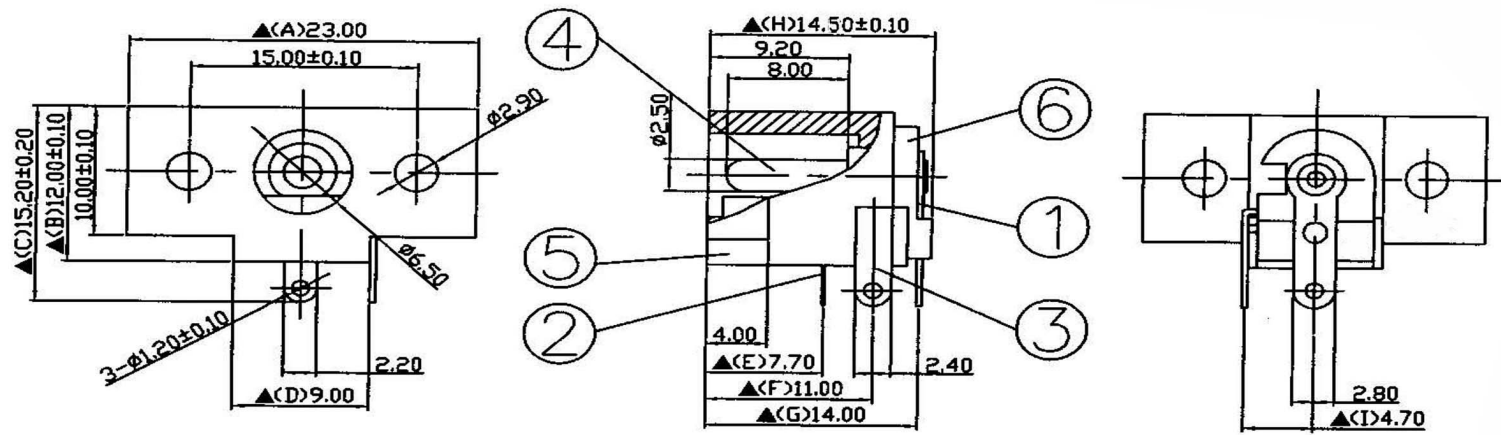


SPECIFICATIONS:
 Contact Resistance : 30mΩ max
 Insulation Resistance : 100MΩ min. at DC 500V
 Dielectric Withstanding Voltage: AC 500V for one minute
 Remark: ▲: The Most Important Dimension



Pin Hole Layout
(Jack Bottom View)

6	Cover	PBT+30%G	1	Black Color
5	Housing	PBT+30%G	1	Black Color
4	Pin(2.5φ)	Copper	1	Nickel Plated
3	Break Terminal	0.4T Brass	1	Silver Plated
2	Sleeve Spring	0.2T Phosphor Bronze	1	Silver Plated
1	Pin Terminal	0.4T Brass	1	Silver Plated
NO	Descricpon	Material	Q'TY	Finish

APPD. 核准 BETTY	SCALE 比例 参考	TOLERANCE 容許公差 .0 ±0.3 .00 ± ANG. ±	PART NAME 品名 DC POWER JACK Φ2.5mm NORMAL CLOSE SLIVER PLATING BLACK ROHS LOW-LEAD	
			PART NO. 料號 C8110-DCVB0000R	
DWG. 製圖 BETTY	UNIT 單位 M M	SIZE. 紙張尺寸 A 4		
DATE 制表日 2008/12/12	PAGE 張數 1 OF 1	REV. 版次 A		

HSM 玄茂科技股份有限公司
HSUAN MAO TECHNOLOGY CO., LTD.