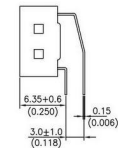
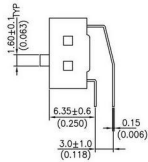
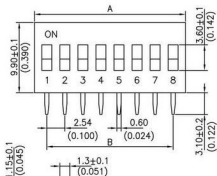


DIMENSION:(UNIT:mm/inches)

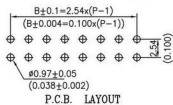
MAX.VOLTAGE 50VDC
MAX. SWITCHING CURRENT 50MA

No.ofPOS	DIM.A	DIM.B
02	6.08(0.239)	2.54(0.100)
03	8.92(0.351)	5.08(0.200)
04	11.16(0.439)	7.62(0.300)
05	13.70(0.539)	10.16(0.400)
06	16.24(0.639)	12.70(0.500)
07	19.08(0.751)	15.24(0.600)
08	21.32(0.839)	17.78(0.700)
09	24.16(0.951)	20.32(0.800)
10	26.40(1.039)	22.86(0.900)
12	31.48(1.239)	27.94(1.100)

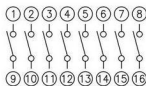


C8300-XXALXJX0R

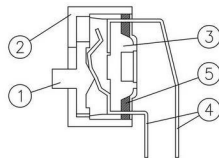
C8300-XXASXJX0R



P.C.B. LAYOUT



CIRCUIT DIAGRAM



CONSTRUCTION

ITEM	DES	MATERIALS	TREATMENT
1	ACTUATOR	UL94V-0 PBT THERMOPLASTIC	WHITE
2	COVER	UL94V-0 PBT THERMOPLASTIC	BLUE, RED, BLACK
3	BASE	UL94V-0 PBT THERMOPLASTIC	BLACK
4	TERMINAL	PHOSPHOR BRONZE	GOLD PLATING
5	POTTING	EPOXY	BLACK

C **8300** — **XX** **A** **L** **N** **J** **L** **0** **R**

- | | | | |
|--|--|------------------------------------|--|
| 1. PRODUCTS:
C: Connector | 5. KEY OPTION:
S: Short Key | 7. CONTACT PLATING:
J: Gold 3U* | 8. INSULATOR COLOR:
B: Black
L: Blue
R: Red |
| 2. SERIES NO.:
8300 | 6. TAPE SEALED OPTION:
Y: W/Tape Sealed
N: W/O Tape Sealed | 9. FILL IT WITH "0" | 10. R: ROHS |
| 3. CONTACT NO.:
02-12 | | | |
| 4. BODY OPTION:
A: Right Angle Type | | | |

RoHS Compliant		HSM 宏茂科技股份有限公司 HSUAN MAO TECHNOLOGY CO., LTD.	
APPRO. 核准	SCALE 比例	TOLERANCE 容許公差	PART NAME 品名
DWG. 圖號	UNIT 單位	SIZE 規格尺寸	DIP SWITCH R/A TYPE XXP SEALED GOLD 3U* PLATING ROHS
DATE 制表日	PAGE 頁數	REV. 版本	PART NO. 料號
2012/6/19	1 OF 1	A 4	C8300-XXAXXJX0R