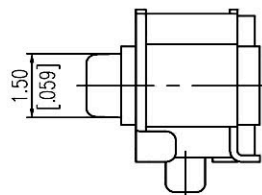
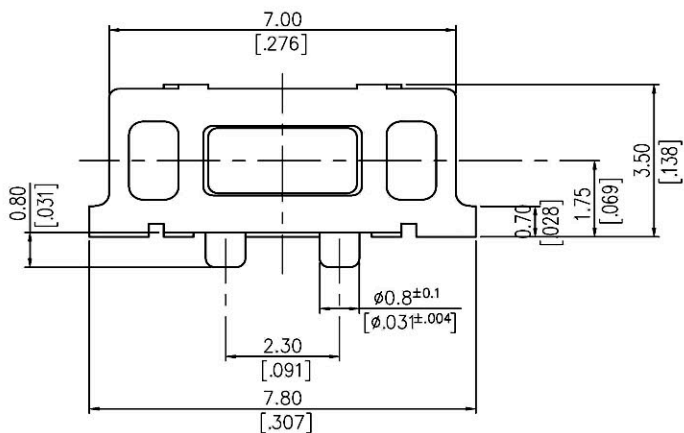
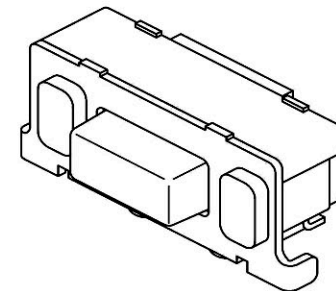
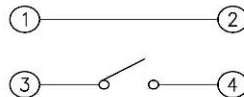
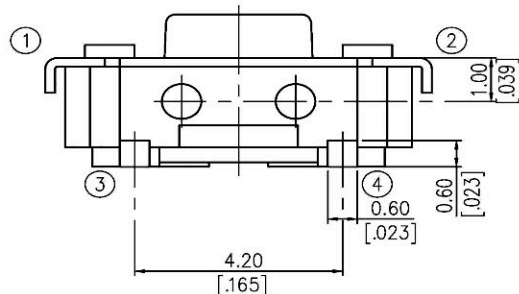
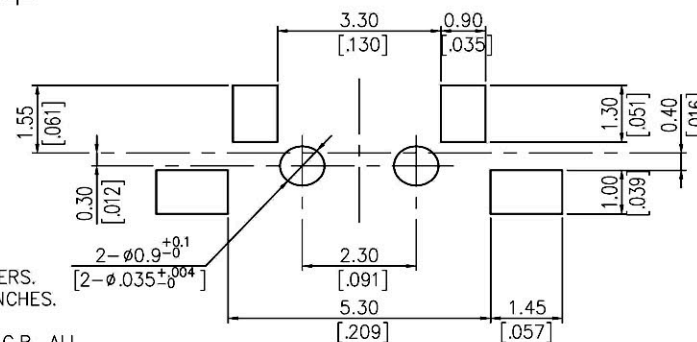


CIRCUIT



PART NO.	COLOR OF STEM	OPERATING FORCE
C8306-AY1BR000R	BLACK	160±50gf
C8306-AY2WR000R	WHITE	260±50gf

P.C.B. LAYOUT



NOTE:  
 1. ALL DIMENSIONS ARE IN MILLIMETERS. BRACKETED DIMENSIONS ARE IN INCHES.  
 2. GENERAL TOLERANCES ±0.3mm  
 3. WHEN SWITCH PLACED ON THE P.C.B. ALL THE TERMINALS SHOULD BE STAYED CLOSE TO P.C.B. 0.10mm MAX. DECLIVITY IS ALLOWABLE.

<b>RoHS Compliant</b>		<b>HSM 玄茂科技股份有限公司</b> <b>HSUAN MAO TECHNOLOGY CO., LTD.</b>	
APPD. 核准 DWG. 製圖 DATE 制表日 2015/5/22	Helen	TOLERANCE 容許公差 0 ±0.25 .00 ± ANG. ± UNIT 單位 M M PAGE 張數 1 OF 1	PART NAME 品名 EXTRA THIN SIDE ACTUATED TACT SWITCH, SMD TYPE (4PIN) WITH POLARIZING FEATURE REEL PACKING ROHS PART NO. 料號 C8306-AY(1,2)(B,W)R000R