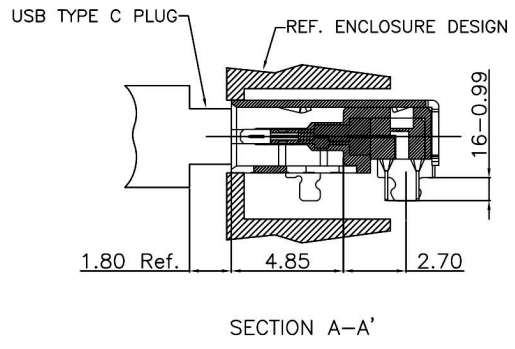


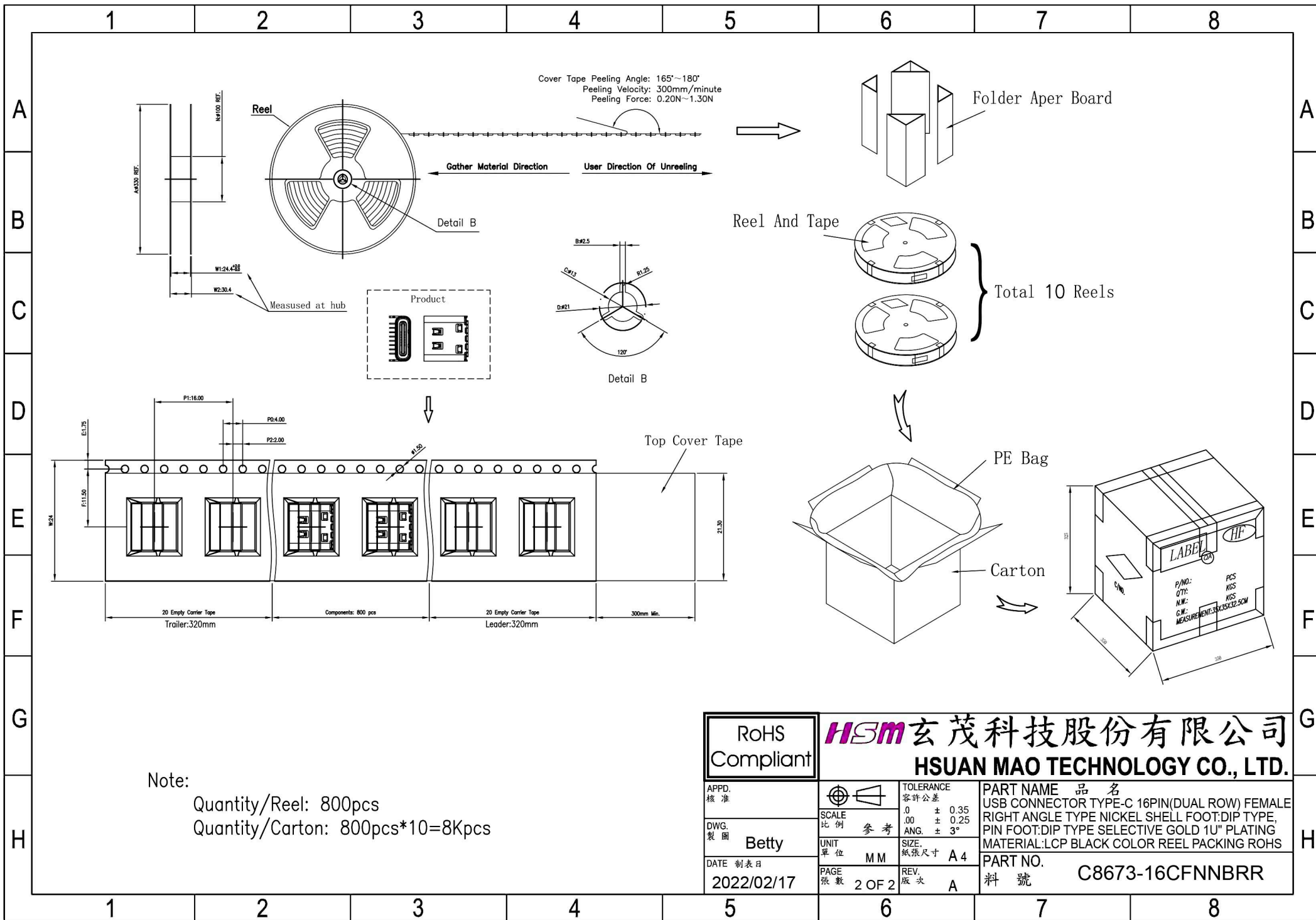
- NOTE:**
- Material:**  
 All Housing: LCP, Black, Thermoplastics, UL94V-0 (Halogen Free).  
 Contact: Copper Alloy  
 Shell: Stainless Stell.  
 Mid Shell Plate: Stainless Stell.
  - FINISH:**  
 Contact: Au 1u" Plated on Contact Area,  
 80u" Min. Bright Tin Plated on Solder Area  
 30u" Min. Nickel Underplating Over All.  
 Shell: 50u" Min. Nickel plated Over All.
  - Specification:**
    - Electrical:**  
 Current Rating: 5A For Pin(A4,A9,B4,B9), 1.25A For Others Pin  
 Insulation Resistance: 100MΩ Min.  
 Contact Resistance: 50 mΩ Max.  
 Dielectric Withstanding Voltage: 100V/AC 1Minute
    - Mechanical Characteristic:**  
 Insertion Force: 5~20N  
 Extraction Force: 0~1000 Cycles 8~20N.  
 1000~10000 Cycles 5~20N  
 Durability :10000 Cycles
  - Recommended process IR REFLOW: 260°C, 3-5seconds.**

**RECOMMENDED P.C.B LAYOUT**  
 GENERAL TOLERANCE:  $\pm 0.05$   
 PCB TOP SURFACE

PIN ASSIGNMENT			
PIN NUMBER	SIGNAL NAME	PIN NUMBER	SIGNAL NAME
A1,A12,B1,B12	GND		
A2	SSTXp1	B11	SSRXp1
A3	SSTXn1	B10	SSRXn1
A4,A9,B4,B9	VBUS		
A5	CC1	B8	SBU2
A6	D+	B7	D-
A7	D-	B6	D+
A8	SBU1	B5	CC2
A10	SSRXn2	B3	SSTXn2
A11	SSRXp2	B2	SSTXp2

<p>RoHS Compliant</p>		<p><b>HSM</b> 玄茂科技股份有限公司  <b>HSUAN MAO TECHNOLOGY CO., LTD.</b></p>	
<p>APPD. 核准</p>	<p>SCALE 比例 参考</p>	<p>TOLERANCE 容許公差        .0 ± 0.35        .00 ± 0.25        ANG. ± 3°</p>	<p>PART NAME 品名        USB CONNECTOR TYPE-C 16PIN(DUAL ROW) FEMALE        RIGHT ANGLE TYPE NICKEL SHELL FOOT:DIP TYPE,        PIN FOOT:DIP TYPE SELECTIVE GOLD 1U" PLATING        MATERIAL:LCP BLACK COLOR REEL PACKING ROHS</p>
<p>DWG. 製圖</p>	<p>UNIT 單位 M M</p>	<p>SIZE. 紙張尺寸 A 4</p>	<p>PART NO.        料號 C8673-16CFNNBRR</p>
<p>DATE 制表日        2022/02/17</p>	<p>PAGE 張數 1 OF 2</p>	<p>REV. 版次 A</p>	





Note:  
Quantity/Reel: 800pcs  
Quantity/Carton: 800pcs\*10=8Kpcs

RoHS Compliant		HSM 玄茂科技股份有限公司 HSUAN MAO TECHNOLOGY CO., LTD.	
APPD. 核准		TOLERANCE 容許公差	PART NAME 品名
DWG. 製圖	Betty	SCALE 比例	USB CONNECTOR TYPE-C 16PIN(DUAL ROW) FEMALE
DATE 制表日	2022/02/17	UNIT 單位	RIGHT ANGLE TYPE NICKEL SHELL FOOT:DIP TYPE, PIN FOOT:DIP TYPE SELECTIVE GOLD 1U" PLATING
		PAGE 張數	MATERIAL:LCP BLACK COLOR REEL PACKING ROHS
		REV. 版次	PART NO. 料號
			C8673-16CFNNBRR