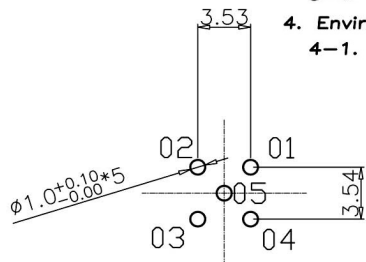
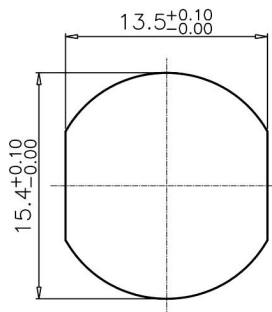


**NUT**



RECOMMEND PANEL CUT-OUT RECOMMEND P.C.B LAYOUT

1. MATERIAL :
  - 1-1. HOUSING : PBT UL94V-0 ; COLOR : BLACK
  - 1-2. CONTACT : BRASS
  - 1-3. NUT : BRASS
  - 1-4. SHELL : BRASS
  - 1-5. O-RING : EPDM ; COLOR : BLACK
2. FINISH :
  - 2-1. CONTACT : SEE TABLE A
  - 2-2. NUT : NICKEL PLATED
  - 2-3. SHELL : NICKEL PLATED
3. ELECTRICAL SPECIFICATION :
  - 3-1. Rated current : 4A
  - 3-2. Rated voltage : 2~4PIN 250V ; 5PIN 60V
  - 3-3. Water proof: IPX7
  - 3-4. INSULATION RESISTANCE : 100MΩ MIN
  - 3-5. DIELECTRIC WITHSTANDING VOLTAGE : 800V
  - 3-6. CONTACT RESISTANCE : < 10mΩ
4. Environmental :
  - 4-1. Operation Temperature : -40℃~85℃

**TABLE A**

C9300-05MABB00R	C9300-03MAGB00R C9300-03MABB00R	C9300-03AMAGB00R C9300-03AMABB00R
C9300-04MABB00R	C9300-02MABB00R	
C9300-03AMAGB00R	GOLD FLASH	
C9300-03MAGB00R	GOLD FLASH	
C9300-03AMABB00R	GOLD 10u"	
C9300-03MABB00R	GOLD 10u"	
C9300-05MABB00R	GOLD 10u"	
C9300-02MABB00R	GOLD 10u"	
C9300-04MABB00R	GOLD 10u"	
PART NO	FINISH	

RoHS  
Compliant

**HSM** 玄茂科技股份有限公司  
HSUAN MAO TECHNOLOGY CO., LTD.

APPD. 核准  
DWG. 製圖  
DATE 制表日  
2020/02/06

SCALE 比例 參考  
UNIT 單位 M M  
PAGE 張數 1 OF 1

TOLERANCE  
.X ±0.20  
.XX ±0.10  
.XXX ±0.05  
.XXXX ±0.03  
ANGULA ±1°  
SIZE 紙張尺寸 A 4  
REV. 版次 A

PART NAME 品名  
M12\*1.0 XXPIN MALE PANEL MOUNT  
IP67 WATERPROOF TYPE A-Code  
DIP 180° TYPE BLACK COLOR ROHS  
PART NO.  
料號 C9300-XXMAXB00R