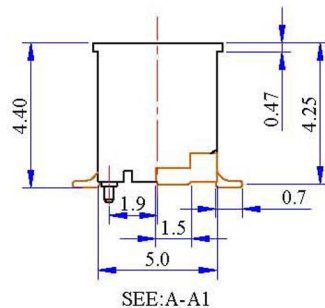
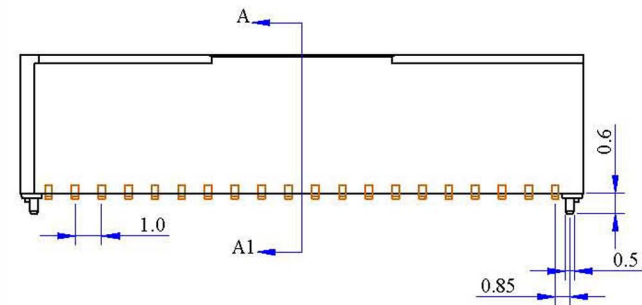


RECOMMENDED P.C. BOARD PATTERN DIM.



Specifications

Electrical

Voltage Rating: 50VAC DC

Current Rating: 1.0A AC DC

Contact Resistance: Initial value/20mΩmax

After environmental testing/40mΩ max

Insulation Resistance: 100MΩmin

Temperature Range: -25°C~+85°C

Withstanding voltage:500V AC/minute

Material and Finish

Header contact:Phosphor bronze,nickel-undercoated,
tin-plated or gold-plated

Water:Glass-filled polyamide,UL94V-0,natural(ivory)

Solder tad:Brass,copper-undercoated,tin/lead-plated

Circuits	Dimension mm (in.)	
	A	B
2*10	9.0(.354)	12.3(.484)
2*15	14.0(.551)	17.3(.681)
2*20	19.0(.748)	22.3(.878)
2*25	24.0(.945)	27.3(1.075)

RoHS Compliant	玄茂科技股份有限公司 HSUAN MAO TECHNOLOGY CO., LTD.		
	APPD. 核准 Betty	TOLERANCE 容許公差 .0 ±0.3 .00 ±0.2 ANG. ±	PART NAME 品名 SH1.0mm WAFER 2XXXP SMT TOP ENTRY TYPE WHITE COLOR W/ POLARIZING ROHS
DWG. 製圖 Yumi	SCALE 比例 參考 UNIT 單位 M M PAGE 張數 1 OF 1	SIZE. 紙張尺寸 A 4 REV. 版次 A	PART NO. 料號 W9110-XXPCXWXDR
DATE 制表日 2007/12/27			